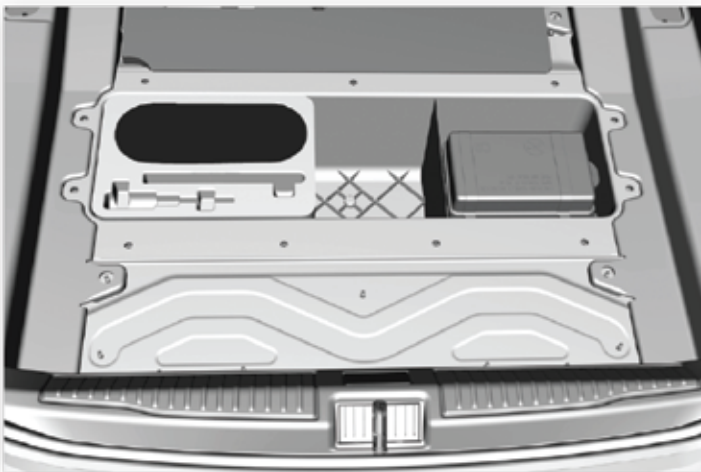


# 2021 Alfa Romeo Giulia

## Emergency Tire Repair Kit



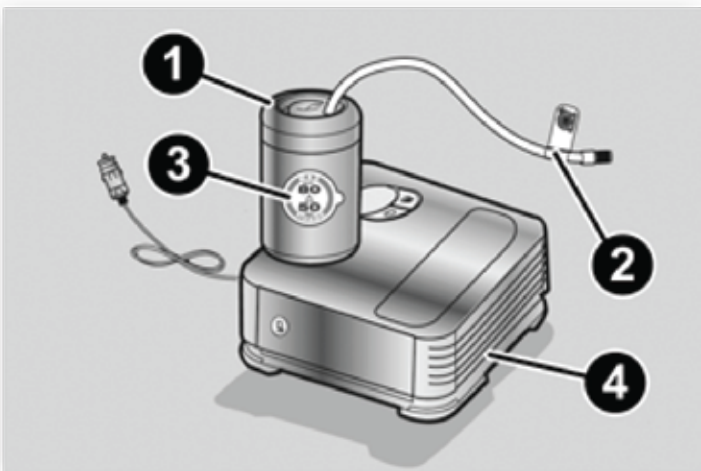
If a tire is punctured, you can make an emergency repair using the Tire Service Kit located in the trunk beneath the load floor.



Tire Service Kit Location

### THE TIRE SERVICE KIT INCLUDES:

- Sealant cartridge containing the sealing fluid
- Filler tube
- Adhesive label with the writing "Max. 50 mph (80 km/h)", to be attached in a position easily visible to the driver (e.g. on the dashboard) after repairing the tire
- Air compressor, complete with pressure gauge and connectors
- An instruction pamphlet for reference in prompt and correct use of the Tire Service Kit, which must be then given to the personnel dealing with the sealant-treated tire
- A pair of protective gloves
- Adaptors for inflating different elements



Tire Service Kit Components

1. Sealant Cartridge
2. Filler Tube
3. Adhesive Label
4. Air Compressor

**Note:** The sealant is effective with external temperatures of between -40°F (-40°C) and 122°F (50°C). The sealant has an expiration date.



**TO USE THE TIRE SERVICE KIT, PROCEED AS FOLLOWS:**

- ① Stop the vehicle in a position where you can repair the tire safely. You should be as far as possible from the side of the road, and in a position that is not dangerous for oncoming traffic. Activate the Hazard Warning Flashers, remove the safety triangle from the trunk, and place it at a suitable distance from the vehicle to make other drivers aware of your presence.
- ② Verify that the valve stem (on the wheel with the deflated tire) is in a position that is near to the ground. This will allow the tire service kit hoses to reach the valve stem and keep the tire repair kit flat on the ground.
- ③ Place the gear selector to PARK (P).
- ④ Apply the Electric Park Brake and cycle the engine OFF.